

28.92± ACRES OF LAND - 12.11± AC LIGHT COMMERCIAL & 16.81± AC INDUSTRIAL

AVAILABLE FOR SALE

South of Howard Road, Between S. Pine Street & S. Schnoor Avenue | Madera, California

INDUSTRIAL ZONED LAND
16.81± ACRES

COMMERCIAL ZONED LAND
12.11± ACRES

PLANNED GRANITE
WHSE DEVELOPMENT

S. SCHNOOR AVE.

S. PINE ST.

For information, please contact:

Nick Audino, SIOR

Senior Vice President - Industrial Division

t 559-447-6270

naudino@pearsonrealty.com

CA RE Lic. #01231272

Kyle Riddering

Vice President - Industrial Division

t 559-447-6246

kriddering@pearsonrealty.com

CA RE Lic. #02094434

NEWMARK
PEARSON COMMERCIAL

Independently Owned and Operated
Corporate License #00020875
newmarkpearson.com

FRESNO OFFICE
7480 N. Palm Ave. #101
Fresno, CA 93711
t 559-432-6200

VISALIA OFFICE
3447 S. Demaree St.
Visalia, CA 93277
t 559-732-7300

The distributor of this communication is performing acts for which a real estate license is required. The information contained herein has been obtained from sources deemed reliable but has not been verified and no guarantee, warranty or representation, either express or implied, is made with respect to such information. Terms of sale or lease and availability are subject to change or withdrawal without notice.

28.92± ACRES OF LAND - 12.11± AC LIGHT COMMERCIAL & 16.81± AC INDUSTRIAL

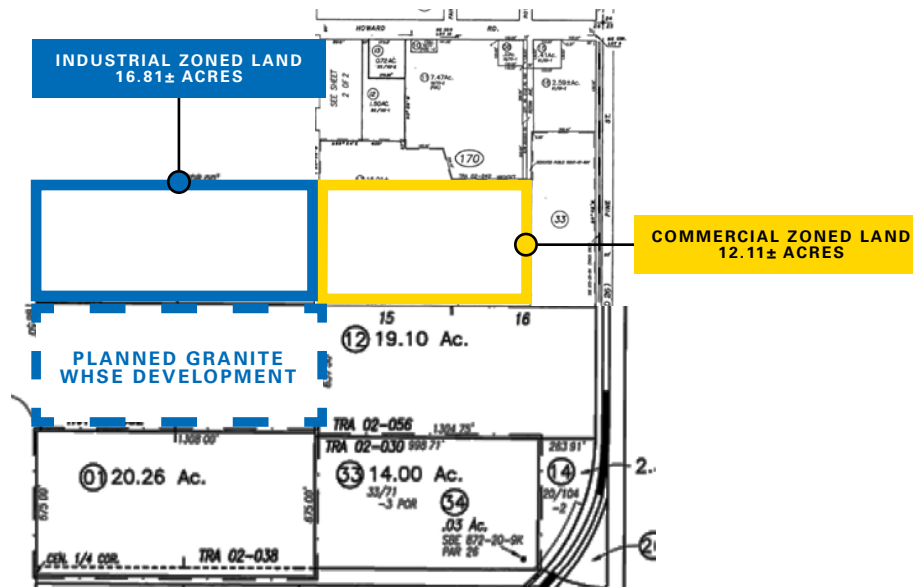
PROPERTY INFORMATION

- Sale Price:** \$3,228,000
Available: 28.92± acres
- 16.81± acres of Industrial Zoned vacant land | **APN:** 009-330-010
 - 12.11± acres of Light Commercial vacant land | **APN:** 009-170-17

PROPERTY DESCRIPTION

- The 16.81 property is located on S. Schnoor Avenue, south of Howard Road and north of W. Almond Avenue.
- The 12.11± acre property is located south of Howard Road, west of S. Pine Street and north of W. Almond Avenue. Rotan Avenue, off of Howard Road has access to this property.

Parcel Map



For information please contact:

Nick Audino, SIOR

Senior Vice President - Industrial Division

t 559-447-6270

naudino@pearsonrealty.com

CA RE Lic. #01231272

Kyle Riddering

Vice President - Industrial Division

t 559-447-6246

kriddering@pearsonrealty.com

CA RE Lic. #02094434

NEWMARK
PEARSON COMMERCIAL

Independently Owned and Operated
Corporate License #00020875
newmarkpearson.com

FRESNO OFFICE
7480 N. Palm Ave. #101
Fresno, CA 93711
t 559-432-6200

VISALIA OFFICE
3447 S. Demaree St.
Visalia, CA 93277
t 559-732-7300

The distributor of this communication is performing acts for which a real estate license is required. The information contained herein has been obtained from sources deemed reliable but has not been verified and no guarantee, warranty or representation, either express or implied, is made with respect to such information. Terms of sale or lease and availability are subject to change or withdrawal without notice.